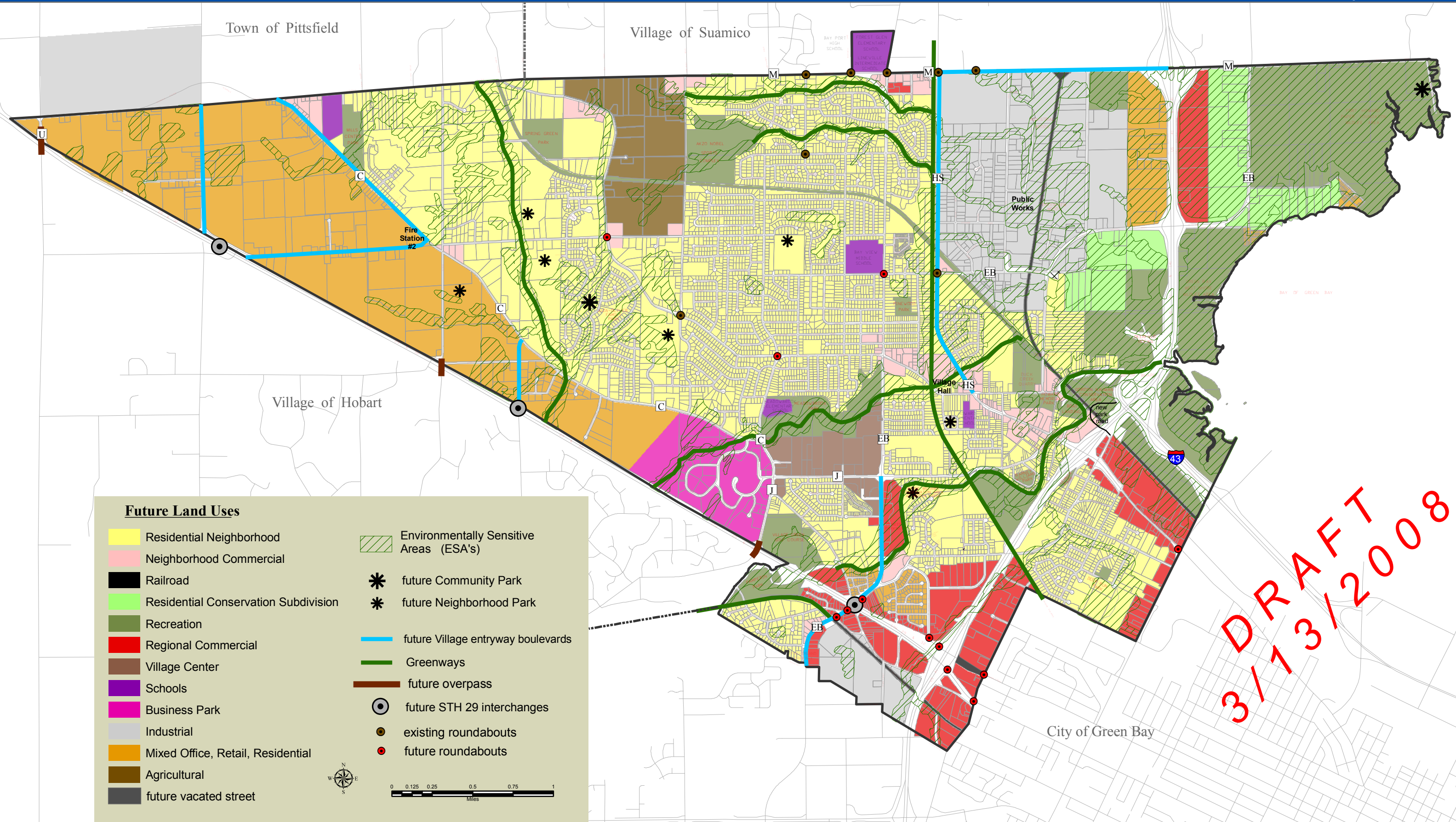




Village of Howard 20-Year Land Use Plan

Original Plan: July 2002
Updated Plan: March 2008



Future Land Uses

	Residential Neighborhood		Environmentally Sensitive Areas (ESA's)
	Neighborhood Commercial		future Community Park
	Railroad		future Neighborhood Park
	Residential Conservation Subdivision		future Village entryway boulevards
	Recreation		Greenways
	Regional Commercial		future overpass
	Village Center		future STH 29 interchanges
	Schools		existing roundabouts
	Business Park		future roundabouts
	Industrial		
	Mixed Office, Retail, Residential		
	Agricultural		
	future vacated street		

Scale: 0 0.125 0.25 0.5 0.75 1 Miles

DRAFT
3/13/2008